

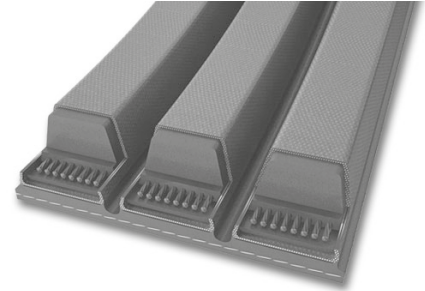


# CINGHIE CONTI®V “MULTIBELT” BANDED V-BELTS CONTI®V

**CINGHIE TRAPEZOIDALI ACCOPPIATE PER AZIONAMENTI  
CON CARICHI FORTEMENTE IRREGOLARI**  
BANDED V-BELTS FOR DRIVES WITH MAJOR LOAD CHANGES

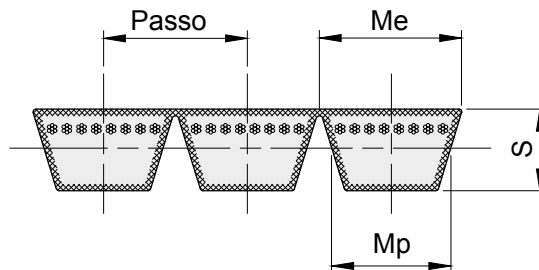
## Proprietà

- › Resistenti a temperature comprese tra -40°C e +70°C in funzione dell'applicazione
- › Particolarmente silenziose
- › Elettricamente conduttrici a norma ISO 1813
- › Relativamente resistenti all'olio
- › Utilizzabili in climi tropicali
- › Resistenti alla polvere



## Properties

- › Temperature range from -40 °C to +70 °C, depending on application
- › Enhanced running smoothness
- › Electrically conductive in accordance with ISO 1813
- › Conditionally resistant to oil
- › Suitable for tropical climates
- › Dust-proof



**DIMENSIONI CINGHIA**  
DIMENSIONS OF V-BELT



descrizione	Passo mm	Me mm	Mp mm	S mm
<b>3V (9J)</b>	10,30	9,0		10,0
<b>5V (15J)</b>	17,50	15,0		16,0
<b>8V (25J)</b>	28,60	25,0		25,5
<b>A</b>	15,88	13,0		11,0
<b>B</b>	19,05	17,0		14,3
<b>C</b>	25,40	22,0		18,0
<b>D</b>	36,50	32,0		21,8
<b>SP2</b>	12,00	9,7	8,5	11,0
<b>SPA</b>	15,00	12,7	11,0	13,0
<b>SPB</b>	19,00	16,3	14,0	16,5
<b>SPC</b>	25,50	22,3	19,0	22,0

Dimensioni e prezzi su richiesta  
All sizes and prices are available on request



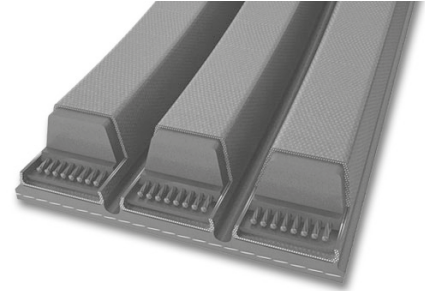
# CINGHIE CONTI®V “MULTIBELT ADVANCE” BANDED V-BELTS “ADVANCE” CONTI®V

**CINGHIE TRAPEZOIDALI MULTIPLE CON ANIMA RESISTENTE RINFORZATA  
DI POLIESTERE PER AZIONAMENTI CON CARICHI FORTEMENTE IRREGOLARI**

**BANDED V-BELTS WITH REINFORCED PE TENSILE MEMBER FOR DRIVES  
WITH MAJOR LOAD CHANGES**

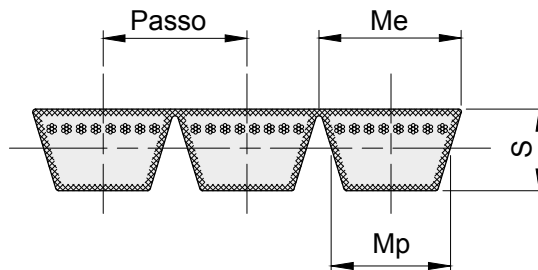
## Proprietà

- › Resistenti a temperature comprese tra -30°C e +80°C in funzione dell'applicazione
- › Relativamente resistenti all'olio
- › Elettricamente conduttrici secondo ISO 1813
- › Resistenti alla polvere
- › Utilizzabili in climi tropicali
- › Potenza aumentata
- › Particolarmente silenziose
- › Idonee per giunti
- › Idonee per controflessioni



## Properties

- › Temperature range from -30 °C to +80 °C depending on application
- › Limited resistant to oil
- › Electrically conductive according to ISO 1813
- › Dust-proof
- › Tropic-proof
- › Higher performance
- › Particularly smooth-running
- › Suitable for clutches
- › Suitable for counterflexing



**DIMENSIONI CINGHIA**  
**DIMENSIONS OF V-BELT**



descrizione	Passo mm	Me mm	Mp mm	S mm
<b>3V (9J)</b>	10,30	9,0		10,0
<b>5V (15J)</b>	17,50	15,0		16,0
<b>8V (25J)</b>	28,60	25,0		25,5
<b>A</b>	15,88	13,0		11,0
<b>B</b>	19,05	17,0		14,3
<b>C</b>	25,40	22,0		18,0
<b>D</b>	36,50	32,0		21,8
<b>SP2</b>	12,00	9,7	8,5	11,0
<b>SPA</b>	15,00	12,7	11,0	13,0
<b>SPB</b>	19,00	16,3	14,0	16,5
<b>SPC</b>	25,50	22,3	19,0	22,0

Dimensioni e prezzi su richiesta  
All sizes and prices are available on request



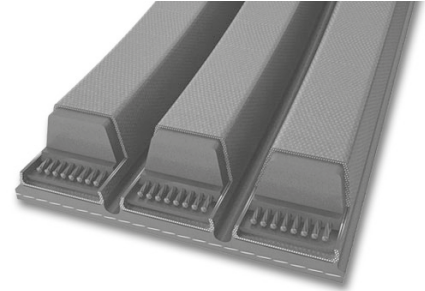
# CINGHIE CONTI®V “MULTIBELT POWER” BANDED V-BELTS “POWER” CONTI®V

**CINGHIE MULTIPLE CON CORDE DI TENSIONE IN ARAMID E MESCOLE SPECIALI  
PER TRASMETTERE MAGGIOR POTENZA, ADATTA PER USE CON TENDICINGHIA ESTERNI**

BANDED V-BELTS WITH LOW-STRETCH ARAMID TENSILE MEMBER AND ADVANCED COMPOUND FOR TRANSMITTING  
LOTS OF POWER WITH HIGHEST LOADS, SUITED FOR USE WITH BACK-TENSIONERS

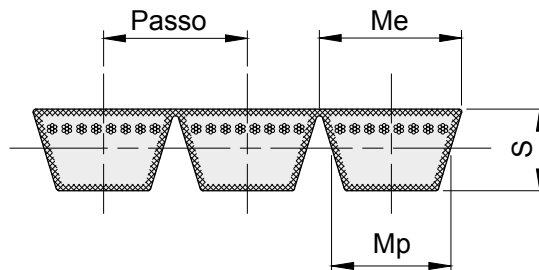
## Proprietà

- › Resistenti a temperature comprese tra -30°C e +80°C in funzione dell'applicazione
- › Elettricamente conduttrici secondo ISO 1813
- › Resistenti alla polvere
- › Utilizzabili in climi tropicali
- › Idonee per grandi carichi
- › Idonee per controflessioni
- › Idonee per giunti
- › Potenza aumentata



## Properties

- › Temperature range from -30 °C to +80 °C, depending on application
- › Electrically conductive according to ISO 1813
- › Dust-proof
- › Tropic-proof
- › Suitable for maximum loads
- › Suitable for counterflexing
- › Suitable for clutches
- › Higher performance



**DIMENSIONI CINGHIA**  
DIMENSIONS OF V-BELT



descrizione	Passo mm	Me mm	Mp mm	S mm
<b>3V (9J)</b>	10,30	9,0		10,0
<b>5V (15J)</b>	17,50	15,0		16,0
<b>8V (25J)</b>	28,60	25,0		25,5
<b>A</b>	15,88	13,0		11,0
<b>B</b>	19,05	17,0		14,3
<b>C</b>	25,40	22,0		18,0
<b>D</b>	36,50	32,0		21,8
<b>SP2</b>	12,00	9,7	8,5	11,0
<b>SPA</b>	15,00	12,7	11,0	13,0
<b>SPB</b>	19,00	16,3	14,0	16,5
<b>SPC</b>	25,50	22,3	19,0	22,0

Dimensioni e prezzi su richiesta  
All sizes and prices are available on request